



marine

**HERTZ**

THE SOUND  
EXPERIENCE







**HERTZ**  
The Sound Experience

Since 1998, Hertz has developed in Italy world-class speakers, amplifiers and DSP for the 12 V industry, focused on reaching the best performance in the real environment of application. Passion for audio entertainment is the essential driving force leading the Hertz engineers to win the never-ending challenge of innovation using the most advanced technologies, always.

Hertz products, highly regarded in over 60 countries worldwide, received several awards from EISA and other leader organizations for its outstanding track record of unique products.

To support its fans and sea lovers, in 2014 Hertz launched the Marine program, bringing the "Hertz Sound Experience" to open water.

**HERTZ MARINE HIGH-PERFORMANCE CONTROL UNITS, SPEAKERS AND AMPLIFIERS DESIGNED TO OPERATE IN THE MARINE ENVIRONMENT, THRILLING YOU WITH THE EMOTIONS OF MUSIC WHILE ENJOYING BOATING**

**HERTZ PRODUCTS DESIGN ORIGINATES FROM THE UNIQUE ITALIAN MARINE LIFE-STYLE**



The Conero Riviera, Marche, Italy - Just 10 miles away from Hertz Headquarters

## marine THE SOUNDTRACK OF YOUR ADVENTURES





marine

HERTZ

# MAKE EVERY OUTING MEMORABLE WITH HERTZ MARINE

## MARINE GRADE SOURCE UNITS

Engineered to maximize fun on board with an exclusive design, Hertz Marine control units are the ultimate solution for high fidelity on open water, thanks to extended connectivity and user-friendly Marine functions.

## PREMIUM CLASS TOWERS

Developed to deliver emotions during water sports sessions, Hertz Marine Towers will light up your parties overwhelming you with a detailed-high-output sound and an exclusive color lighting experience, making your special events unique.

## HIGH-PERFORMANCE SPEAKERS

Hertz Marine speakers will thrill you with unlimited emotions, preserving their astonishing performance season after season. The ultra-complete range features a wide array of grilles, colors and sizes, to satisfy every installation need. Last but not least, Hertz Marine subwoofers will complete the low-end reproduction with outstanding output enhancing your cruising experience.

## HIGH-POWER AMPLIFIERS

Hertz Marine amplifiers are made to withstand the hard life on board, delivering premium audio quality even with the most demanding installation, thanks to complete integrated crossovers and the unmatched power-to-size ratio.





HERTZ MARINE PRODUCTS ARE READY TO SAIL  
AND DESIGNED TO LAST, BEING ENGINEERED  
BY A DEDICATED R&D TEAM USING IN-HOUSE  
DEVELOPED SOFTWARES AND ENDURANCE  
TESTED TO FACE THE HARDEST CONDITIONS  
THAT CAN BE FOUND IN OPEN WATER

POWER  
FOR THE WAVES  
PURE MARINE  
CERTIFIED PRODUCT

WATER  
JET

DUST  
INTRUSION

UV  
RESISTANT

THERMAL  
SHOCK

VIBRATION

HUMIDITY

SALT  
FOG

STAINLESS

P  
C  
B  
CORROSION

**WATER JET TESTED**  
The protection grade IP64 for amplifiers, IP65 for speakers and IP66 for source units define all the Hertz **Pure Marine Certified** products as totally protected against water jets of different entities, making them highly performant in the marine environment.

**DUST INTRUSION PROTECTION**  
Dust intrusion is an important factor to handle in order to preserve the unique level of performance ensured by our Marine products for a long time. This is why they are totally protected against the intrusion of solid parts.

**UV RESISTANT**  
According to the severe ASTM-D4329 standards for UV resistance, all the materials used for Hertz Marine products are designed to face long time exposition to UV radiations while cruising on the open sea.

**THERMAL SHOCK TESTED**  
High quality ASA plastic and Polypropylene cones with co-molded Santoprene surround guarantee resistance to a wide range of temperatures.

**VIBRATION**  
“You can’t cross the sea merely by standing and staring at the water” - Rabindranath Tagore. This is why we stress our Marine products with severe vibration tests to simulate the worst offshore conditions, always ensuring full operability.

**HUMIDITY PROTECTION**  
High humidity is the default condition that marine electronics and speakers have to face 99% of the time. To prevent any mechanical end electronical failure, Hertz **Pure Marine Certified** products are subjected to severe stress tests to take them to the limit.

**SALT FOG TESTED**  
To satisfy the standards required by ASTM-B117, Hertz Marine products are tested with massive salt fog spray to ensure a complete resistance to corrosion, typical of this atmospheric agent.

**STAINLESS HARDWARE**  
Stainless hardware is unbeatable against rust and corrosion, preserving Hertz Marine speakers and electronics from degradation over time due to exposure to nature.

**CORROSION PROTECTION**  
Electronics components corrosion caused by exposure in wet environments is totally neutralized by the use of dedicated marine-grade (epoxy coated) PCB boards.





POWER  
FOR THE WAVES  
THE PURE MARINE  
CERTIFIED PRODUCT

200W  
MOSFET POWER  
50 W X 4



HMR 3  
AUDIO ENTERTAINMENT SYSTEM

Designed to withstand the most extreme marine conditions, HMR 3 source unit is a true incarnation of the “Hertz Pure Marine Certified Product” philosophy. SiriusXM-Ready™, Audio streaming, Aux-in port, USB port (compatible with a large selection of popular smartphones) convert your deck in a real multimedia environment completed by an FM/AM PLL radio with Marine Weather Band. The large 3” color display remains visible even during daytime navigation and the big buttons make it easy operating with HMR 3 also in motion.

- Hertz **Pure Marine Certified Product** stamp featuring the IP66 protection grade, ASTM-D4329 standards for UV resistance and ASTM-B117 for salt fog operability.
- Three independent zones, transom wired remote option for operability all around the boat.
- Optional HTR 3 display remote and HTR 1 button remote.
- Marine-grade Full Color 3” LCD with bonded screen featuring battery voltage indicator.
- 7 colors push-button panel and two backlight levels.
- PLL True Marine Radio with multi-format reception FM/AM, Weather Band and automatic memory storing.
- SiriusXM™ ready.
- Wide range of media playbacks including USB audio files reproduction and analog AUX IN.
- 7 bands audio Equalizer featuring 5 presets (CLASSIC/JAZZ/ROCK/POP/OPTIMAL) and one USER CUSTOM adjustment.
- Bass/Treble controls independent to each Zone, Subwoofer adjustable level and crossover (90-120-180Hz/12dB-Oct.) plus Loudness control.
- Dedicated Android/iOS App

REMOTE CONTROLLER

The audio circuits built with selected components feature three pairs of stereo outputs providing the ability to create three independently controlled listening areas, settable via the HTR 3 and HTR 1 remote controls provided. An extra pre-out with adjustable level and filter (90-120 180Hz/12dB-Oct.) allows the addition of a subwoofer.

IP66 3 ZONE USB 2.0 MULTI COLOR 7 BAND EQ

ANDROID APP IOS APP

SiriusXM READY



POWER  
FOR THE WAVES  
THE PURE MARINE  
CERTIFIED PRODUCT

200W  
MOSFET POWER  
50 W X 4



HMR 10  
HMR 10 D  
DIGITAL MEDIA RECEIVER

HMR 10 is ideal for boating enthusiast who want a great sound onboard with a gauge-style installation. With two pairs of high quality stereo outputs, a screen readable at all times and a generous marine-grade control panel, it will be a breeze to control your favorite playlist on USB or Bluetooth® streaming for maximum fun in water. HMR 10 D provides additional DAB+ compatibility to listen to your favorite radio stations with unmatched audio quality.

- Hertz **Pure Marine Certified Product** stamp featuring the IP66 protection grade, ASTM-D4329 standards for UV resistance and ASTM-B117 for salt fog operability.
- Easily readable screen.
- PLL True Marine Radio with multi-format reception FM (HMR 10 D with RDS), AM (only HMR 10) and automatic memory storage.
- Wide range of media playbacks including Bluetooth streaming, USB playback and analog AUX IN.
- Equalizer featuring 3 presets (HERTZ EQ, CLASSIC, POP).
- Loudness control.
- DAB+ digital radio available with HRM 10 D model.
- Fits in standard Gauge installation

IP66 USB 2.0 Bluetooth 3 PRESET EQ DAB+ Digital Audio Broadcasting





marine

POWER  
FOR THE WAVES  
THE  
PURE MARINE  
CERTIFIED PRODUCT



HIGH-PERFORMANCE SPEAKERS

HERTZ



## HMX

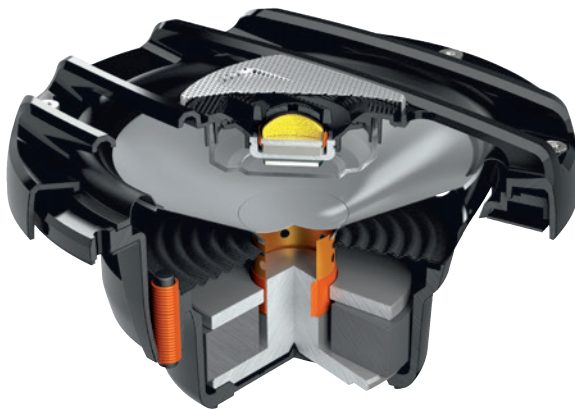
HMX coaxials are engineered to operate in open water, pleasing you with the incomparable emotions of music for years on end: the specific ASA plastic grilles and polypropylene cone with co-molded Santoprene surround provide UV resistance according to the severe ASTM-D4329 standards. The Aramid fiber spider with silicone-insulated lead wire ensures durability and constant performance over time.

Parts and assembly methods are designed to meet high-humidity marine environments (ASTM-B117 & IP65), ensuring the best audio performance season after season.

- Hertz **Pure Marine Certified Product** stamp featuring the IP65 protection grade, ASTM-D4329 standards for UV resistance and ASTM-B117 for salt fog operability.
- 1.4" Neodymium magnet tweeter featuring a PEI material dome combined with faceplate and acoustic lens optimized for best off-axis dispersion and highest SPL.
- Sound-transparent stainless-steel tweeter mesh grille providing efficient high frequency transfer, eye catching look and a rock-solid protection.
- Long-throw 25mm (1") voice coil woofer fine-tuned for infinite baffle applications.
- Sealed built-in crossover with resettable solid-state tweeter protection circuit.
- Gold-plated corrosion resistant terminals.

### LED LIGHTING OPTION

HMX coaxials are all available with RGB LEDs option (LD) featuring a lighting circuit integrated under the grille, protected by a Polypropylene transparent cover acting as light diffuser. Using the optional HM RGB 1 BK remote control you can change the LED color to suit your mood or craft, boosting your party to a different level!



### HM RGB 1 BK OPTIONAL RGB REMOTE CONTROL



HM RGB 1 BK is composed by an RGB CONTROLLER specifically developed for LEDs option models including a radio frequency remote control with a wide array of functionalities ranging from the selection of the color better matching your boat/ATV/motorcycle to the creation of a lighting game reacting to music tempo.



150W  
POWER HANDLING

**HMX 6.5**  
6.5" MARINE COAX WHITE

**HMX 6.5-LD**  
RGB LEDS 6.5" MARINE  
COAX WHITE



**HMX 6.5-C**  
6.5" MARINE COAX BLACK

**HMX 6.5 LD-C**  
RGB LEDS 6.5" MARINE  
COAX BLACK



200W  
POWER HANDLING

**HMX 8**  
8" MARINE COAX WHITE

**HMX 8 LD**  
RGB LEDS 8" MARINE  
COAX WHITE



**HMX 8-C**  
8" MARINE COAX BLACK

**HMX 8 LD-C**  
RGB LEDS 8" MARINE  
COAX BLACK

IP65



UV  
RESISTANT



WATER  
JET



SALT  
FOG





**POWER**  
FOR THE WAVES  
**PURE MARINE**  
CERTIFIED PRODUCT

**200W**  
POWER HANDLING

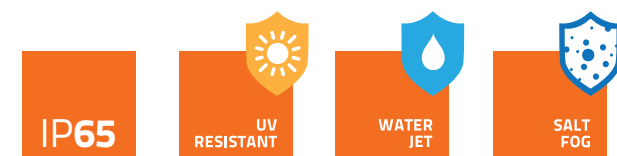


## HTX

Are you ready to enjoy your favorite track at high output level during your daily water ski session? Hertz Marine Towers, available with Clamp & Flat mounting options, will make your sport and leisure outings unforgettable, thanks to impressive audio performance and cool color lighting. The solid 316-Stainless steel clamp mounting is ideal for Round or Square profile pipe applications where sound needs to be easily oriented and quickly released.

This is possible thanks to Q-OS<sup>2</sup> (Quick Orientation & Release for Sound & Safety) patent pending technology.

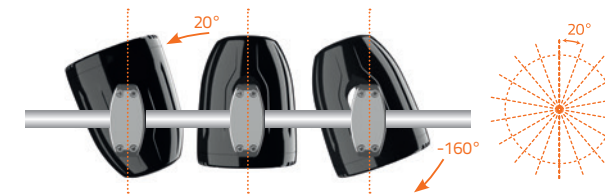
Flat mounting option has been specifically developed for installations where compactness is required to minimize the total height. Enclosure and grilles are made of High-Impact & UV-resistant ASA polymer for the best durability under severe environmental conditions.



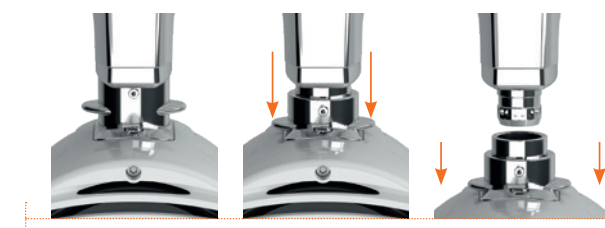
### ADJUSTABLE LOGOS - 64 STEPS



### QUICK ORIENTATION - 18 STEPS



### FAST RELEASE



Discover  
Adjustable  
logo



Discover  
Q-OS<sup>2</sup> Quick  
Orientation



Discover  
Q-OS<sup>2</sup> Quick  
Release

### ADJUSTABLE LOGO

"Adjustable logo" allows for several tower positioning without affecting the correct Hertz logo orientation. Front and rear logo can be oriented within 64 steps.

### Q-OS<sup>2</sup> TECHNOLOGY\*

**QUICK ORIENTATION & RELEASE FOR SOUND & SAFETY**  
This innovative design encompasses all the requirements for tower clamping such as:

- Durability thanks to the solid 316 Stainless Steel construction;
- Tower can be quickly oriented within 18 steps (20° each) along horizontal axis for best sound projection and diffusion over the listening area;
- Quick Mechanical/Electrical release for security/anti-theft and cleaning;
- Multi-pole high current connection self-contained into the clamp structure;
- Clamp structure includes rubber inserts for vibrations damping and fits both round roll-bar [38 mm, 76 mm (1-1/2" to 3")] and square roll-bar or roof mounting by detaching clamp basement upper part. Optional fitting accessories available for major OEM brands.

\*Patent pending

- Hertz **Pure Marine Certified Product** stamp featuring the IP65 protection grade, ASTM-D4329 standards for UV resistance and ASTM-B117 for salt fog operability.
- Equipped with dedicated 8" coaxial speaker featuring a long-throw 32 mm (1.26") voice coil woofer with polypropylene cone injected with UV inhibitors and 1.4" Neodymium magnet tweeter.
- RGB led lighting creates sophisticated atmosphere, adding tons of class to your vessel. Front RGB lighting is included built-in the front grille, while rear RGB lighting is an add-on with the specifically developed HTX RGB LOGO.1 accessory (available both in black and white color).





marine



**HTX 8 M-CL-W**  
MARINE TOWER COAX 8"  
CLAMP WHITE



**HTX 8 M-CL-C**  
MARINE TOWER COAX 8"  
CLAMP BLACK



**HTX 8 M-FL-W**  
MARINE TOWER COAX 8"  
FLAT WHITE



**HTX 8 M-FL-C**  
MARINE TOWER COAX 8"  
FLAT BLACK



**HTX RGB W LOGO.1**  
OPTIONAL RGB LED LIGHTING  
REAR LOGO WHITE



**HTX RGB C LOGO.1**  
OPTIONAL RGB LED LIGHTING  
REAR LOGO BLACK



**HM RGB 1 BK**  
OPTIONAL RGB  
REMOTE CONTROL

The optional rear Hertz led logo creates the same sophisticated atmosphere of front led, adding tons of class to your vessel.



HERTZ

**POWER  
FOR THE WAVES**  
THE  
**PURE MARINE**  
CERTIFIED PRODUCT



## HMX SPORT STYLE

Give your boat a more aggressive look with HMX sport style. Thanks to the combination of the open-sight cone and RGB LED option, it will be easy to create an impressive atmosphere for your boat party, ensuring an unforgettable time for your guests.



**150W**  
POWER HANDLING

**HMX 6.5 S**  
6.5" MARINE COAX SPORT

**HMX 6.5 S-LD**  
RGB LEDS 6.5" MARINE  
COAX SPORT



**200W**  
POWER HANDLING

**HMX 8 S**  
8" MARINE COAX SPORT

**HMX 8 S-LD**  
RGB LEDS 8" MARINE  
COAX SPORT



**HM RGB 1 BK**  
OPTIONAL RGB  
REMOTE CONTROL

[hertzaudiovideo.com](http://hertzaudiovideo.com)



marine

COAXIAL SPEAKERS

HERTZ

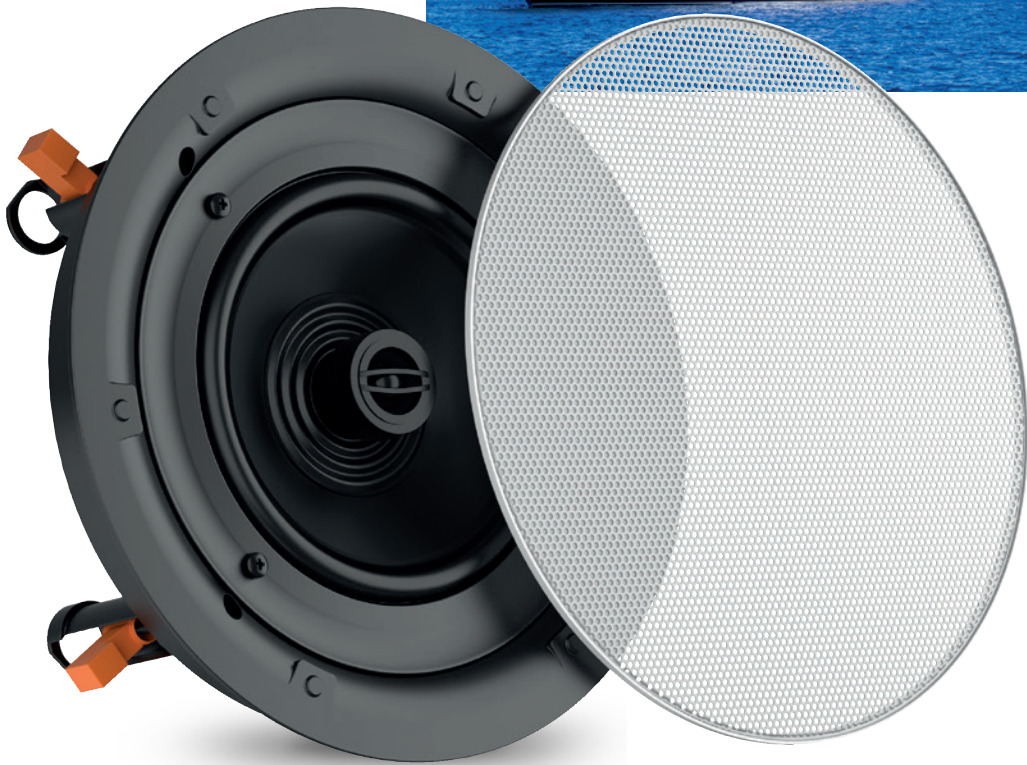
POWER  
FOR THE WAVES  
THE PURE MARINE  
CERTIFIED PRODUCT

100W  
POWER HANDLING



POWER  
FOR THE WAVES  
THE PURE MARINE  
CERTIFIED PRODUCT

100W  
POWER HANDLING



## HEX

Premium quality and cool styling, this is HEX line. Available with both marine and classic grilles, HEX coaxial will give you years of pure fun while cruising, being over engineered and tested for Marine applications. The compact 6.5" speaker, with a depth of only 2.36 in. delivers a detailed and dynamic sound, making every outing memorable.

- Hertz **Pure Marine Certified Product** stamp featuring the IP65 protection grade, ASTM-D4329 standards for UV resistance and ASTM-B117 for salt fog operability.
- High efficiency tweeter designed with FEM simulation to maximize off-axis emission, typical of in-boat install.
- Sound-transparent mesh grille, providing an elegant style and a rock-solid protection.
- Woofer with 25 mm (1") voice coil fine-tuned for infinite baffle application featuring silicone insulated lead wire for durability.
- Sealed built-in crossover with resettable solid-state tweeter protection circuit.
- Nickel-plated corrosion resistant terminals.



## IN-CEILING HEX

Hertz marine In-Ceiling speaker is designed to deliver thrilling sound with a near stealth installation. Engineered to be incredibly durable, they are fine-tuned for in-wall positioning providing top audio performance from very discreet designs. This includes an advanced crossover built with marine conformal coated PCB encapsulated in a sealed enclosure to prevent corrosion.

- Hertz **Pure Marine Certified Product** stamp featuring the IP65 protection grade, ASTM-D4329 standards for UV resistance and ASTM-B117 for salt fog operability.
- Edgeless mesh grille with magnetic locking system designed to disappear from view.
- Sealed crossover filter made by marine-grade coded PCB to prevent corrosion against salt fog.
- Dedicated crossover designed to optimize sound emission for in-wall install.
- High efficiency tweeter designed with FEM simulation to maximize sound projection for in-wall and in-ceiling installation.
- Woofer with 25 mm (1") voice coil and 6  $\Omega$  impedance, optimized for any amplifiers system.
- Silicone insulated lead wires for extended durability in outdoor application.
- Fast and easy installation thanks to the robust hooking system.





marine



**HEX 6.5 M-W**  
6.5" MARINE COAX WHITE



**HEX 6.5 M-C**  
6.5" MARINE COAX BLACK



**HEX 6.5 C-W**  
6.5" MARINE COAX CLASSIC



**HEX 6.5 IC-W**  
IN-CEILING 6.5" MARINE COAX

**HERTZ**

**POWER  
FOR THE WAVES  
THE PURE MARINE  
CERTIFIED PRODUCT**

**500W**  
POWER HANDLING

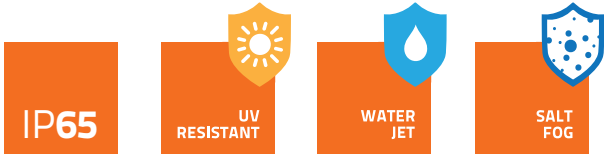


HIGH-PERFORMANCE SUBWOOFERS

## HMS MARINE SUBWOOFER

HMS subwoofers are designed to be installed without the need for a dedicated enclosure, delivering powerful and precise bass that will bring your party to the next level! The motor and suspension design are optimized for high-power, infinite-baffle operation featuring long linear excursion capability for tremendous output with low distortion. Hertz Marine subwoofers not only add tons of bass output to your system but also relieve the main speakers from the hard work of reproducing the lowest frequency range, maximizing the overall system performance, for unlimited sound pressure and emotion!

- Hertz **Pure Marine Certified Product** stamp featuring the IP65 protection grade, ASTM-D4329 standards for UV resistance and ASTM-B117 for salt fog operability.
- Long-throw 50 mm (2") voice coil woofer engineered for infinite baffle application featuring polypropylene cone injected with UV inhibitors and co-molded Santoprene surround.
- Progressive-design aramid fiber spider with silicone-insulated lead wires ensuring durability and constant performance over time.
- High-excursion mobile equipment driven by a massive magnetic group encapsulated into a marine-grade polymer injected basket.
- Gold-plated corrosion resistant brass connection terminals with silicone cap protecting lead wire junction point.



**HMS 10 B-C**  
10" MARINE SUBWOOFER BLACK

**HMS 10 B**  
10" MARINE SUBWOOFER WHITE

**HMS 10 B-C2**  
2 Ω 10" MARINE SUBWOOFER BLACK





POWER  
FOR THE WAVES  
THE  
PURE MARINE  
CERTIFIED PRODUCT

1500W  
D-CLASS  
MAX POWER



**HCP 5 MD**  
FIVE CHANNELS  
MARINE AMPLIFIER

**HCP 5 MD 24V**  
24V FIVE CHANNELS  
MARINE AMPLIFIER



**HRC**  
Hertz Remote Control  
  
Optional for  
HCP 5MD / HCP 5MD 24V

POWER  
FOR THE WAVES  
THE  
PURE MARINE  
CERTIFIED PRODUCT

600W  
D-CLASS  
MAX POWER  
2 Ω STABLE



**HMP 1D**  
MONO MARINE  
AMPLIFIER

**HMP 4D**  
FOUR CHANNELS  
MARINE AMPLIFIER



**HRC BM**  
Hertz Remote Control  
Bass Management  
  
Included for HMP 1D

HCP M

With a compact design featuring conformal coated PCB, HCP M series are ready to face the open water environment, providing tons of clean power. The heat sink has been crafted from extruded aluminium, a material unmatched for lightness, robustness and heat dissipation. To keep size to a minimum, the power transistors are placed between the PCB and the top side of the heat sink where heat is gathered. Built up heat is then directed to the special dissipation “wings” along the side of the amplifier. The complete crossover filters with variable frequency and the bridge operation mode improve application versatility for the design of ultimate active systems in your vessel.

- Hertz **Pure Marine Certified Product** stamp featuring the IP64 protection grade, ASTM-D4329 standards for UV resistance and ASTM-B117 for salt fog operability.
- Compact design built from extruded aluminum heatsink with top side ensuring effective heat transfer.
- Power supply featuring multiple winding transformer, Low-ESR 105°C capacitors, 2 Ω stable output stage.
- Complete crossover filters providing a greater application versatility for the design of active systems.
- Bridge operation mode to drive a subwoofer or to create a powerful dual-mono system.
- Bass Boost adjustable via selector, for more punch from speakers.
- Special balanced input circuitry to reject electro-magnetic disturbances.
- Hi-Level and lo-level inputs to be compatible with any source.
- Short-circuit and thermal protections with auto resetting.

HMP

The compact HMP amplifiers with a cast-aluminium IP64 chassis, are the ideal choice for adding multi-zone audio to your boat. Class-D technology maximizes efficiency ensuring an incredible power to size ratio and low battery drain. The complete integrated crossover and the bridge operation mode improve versatility to satisfy every installation need.

- Hertz **Pure Marine Certified Product** stamp featuring the IP64 protection grade, ASTM-D4329 standards for UV resistance and ASTM-B117 for salt fog operability.
- HRC BM (Hertz Remote Control Bass Management) included.
- Bass Boost adjustable via selector, for more punch from speakers.
- Complete crossover filters allowing for easy setup and system flexibility.
- Hi-Level and lo-level inputs to be compatible with any source.
- Special balanced input circuitry to reject electro-magnetic disturbances.
- Short-circuit and thermal protections with auto resetting.

HI POWER  
2 OHM  
STABLE

CORROSION

WATER  
JET

SALT  
FOG

800W  
AB-CLASS  
MAX POWER

**HCP 2MX**  
TWO CHANNELS  
MARINE AMPLIFIER

760W  
AB-CLASS  
MAX POWER

**HCP 4M**  
FOUR CHANNELS  
MARINE AMPLIFIER



IP64

CORROSION

WATER  
JET

SALT  
FOG





HIGH-PERFORMANCE SPEAKERS

HMX

COAX specifications	Size mm (in.)			Power Hand. W		Imp. Ω	Freq. Resp. Hz	Sens. dB/SPL	Magnet WF/TW	Woofer Cone / Tweeter Dome
	Woofer	Tweeter	Mounting	Peak	Cont.					
HMX 6.5 (C/LD/S)	165 (6.5)	36 (1.4)	69 (2.72)	150	75	4	50 - 25 K	89	High density flux ferrite / Neodymium	Polypropylene / PEI
HMX 8 (C/LD/S)	200 (8)	36 (1.4)	91 (3.58)	200	100	4	45 - 25 K	91		

HEX

COAX specifications	Size mm (in.)			Power Hand. W		Imp. Ω	Freq. Resp. Hz	Sens. dB/SPL	Magnet WF/TW	Woofer Cone / Tweeter Dome
	Woofer	Tweeter	Mounting	Peak	Cont.					
HEX 6.5 (M-C/M-W)	165 (6.5)	24 (0.9)	61,7 (2.43)	100	50	4	50 - 23 K	88	High density flux ferrite / Neodymium	Polypropylene / PEI
HEX 6.5 (CL-W/IC-W)	165 (6.5)	24 (0.9)	61,5 (2.42)	100	50	4 (6 IC-W)	50 - 23 K	88		

PREMIUM CLASS TOWER

HTX

TOWER specifications	Size mm (in.)			Power Hand. W		Imp. Ω	Freq. Resp. Hz	Sens. dB/SPL	Magnet WF/TW	Woofer Cone / Tweeter Dome
	Woofer	Tweeter	Min. Mounting Height clamp/flat	Peak	Cont.					
HTX 8 M-CL-C/W HTX 8 M-FL-C/W	200 (8)	36 (1.4)	325 (12.8) / 237 (9.3)	200	100	4	45 - 25 K	91	High density flux ferrite / Neodymium	Polypropylene with UV inhibitors / PEI

MARINE SUBWOOFERS

HMS

SUB specifications	Size mm (in.)	Mounting	Power Handling W		Imp. Ω	Sensitivity dB/SPL	Application	Magnet	Cone
			Peak	Cont. program					
HMS 10 B-C/C2	250 (10)	145 (5.71)	500	250	4 (2 C2)	88 (88,5 C2)	Infinite baffle	High density flux ferrite	Polypropylene with UV inhibitors

MARINE GRADE SOURCE UNITS

HMR 3

Display	3" (960x240p)- Full color LCD with bonded screen
IP protection	IP66
Supply Voltage	11 - 16 Vdc ISO8846/SAE J1171 Ignition Protection Certified
Musical Output Power	4 x 50 W @ 4 Ω
Pre -out channels/level	3 pair (Zone 1,2,3) + 1 sub / 5V peak
FM	87.5 - 108 MHz EU / 87.5 - 107.9 MHz USA
AM	522 - 1620 KHz EU / 530 - 1710 KHz USA
WB	162.400 - 162.500 MHz USA
Sirius XM radio	SVX 300 - Optional module (subscription required)
USB 2.0 - Charging 2.1A	MP3/WMA/Apple Direct USB (Only lightnig devices)
Bluetooth	2.1+EDR / Music streaming A2DP / AVRCP with APP control
Triple Zone function	HTR 3 + HTR 1 optional wired remotes with 30 m (100 ft) cable
Unit Dimension W x H mm (in.)	123 (4.84)
Mounting Hole W x H mm (in.)	79 (3.11)
Mounting Depth W x H mm (in.)	101 (3.98)
Mounting Method	U-Bracket - Screwed
Operating Temp Range °C (°F)	0 to 50 (32 to 10)

HMR 10 / 10D

Display	2.8" DOT Matrix display
IP protection	IP66
Supply Voltage	10.5 - 16 Vdc
Musical Output Power	4 x 50 W @ 4 Ω
Pre-out channels/level	4 x 4Vrms (Front - Rear)
FM (RDS only for HMR 10D)	87.5 - 108 MHz EU (HMR 10 - HMR 10 D) 87.5 - 107.9 MHz USA (only for HMR 10)
AM (only for HMR 10)	522 - 1620 KHz EU / 530 - 1710 KHz USA
DAB+ (only for HMR 10D)	Digital audio broadcasting
USB 2.0 - Charging 1 A	MP3/WMA
Bluetooth	2.1+EDR / Music streaming A2DP/AVRCP
Unit Diameter mm (in.)	113 (4.45)
Mounting Hole W x H mm (in.)	92 (3.62)
Mounting Depth W x H mm (in.)	72 (2.83)
Mounting Method	U-Bracket
Operating Temp. Range °C (°F)	0 to 50 (32 to 10)

HIGH-POWER AMPLIFIERS

HCP M

AMP specifications			HCP 2MX	HCP 4M	HCP 5MD - (5MD 24 V)
Channel Mode			2 - 1	4 - 3 - 2	5 - 3
Output Power (RMS) @ 14.4 VDC	@ 4Ω	W x ch	120 x 2	65 x 4	65 x 4 + 200 x 1
	@ 2Ω	W x ch	200 x 2	95 x 4	105 x 4 + 330 x 1
	@ 4Ω	W x ch (3 ch)	-	65 x 2 + 190 x 1	210 x 2 + 200 x 1
	@ 2Ω + 4Ω	W x ch (3 ch)	-	95 x 2 + 190 x 1	-
	@ 4Ω + 2Ω	W x ch (3 ch)	-	-	210 x 2 + 330 x 1
	@ 4Ω	W x ch (2 ch)	-	190 x 2	-
Filters	@ 4Ω	W x ch (mono)	400 x 1	-	-
	Bypass		Yes	Yes	Yes
	Hi-Pass	Hz @ dB/Oct.	50 ÷ 3,2k @ 12	A/B: 80 @ 12	A: 50 ÷ 5k @ 12 B: 50 ÷ 5k @ 12
	Band-Pass	Hz @ dB/Oct.	-	-	B: 50 ÷ 500 @ 12 B: 50 ÷ 5k @ 12
Boost	Lo-Pass	Hz @ dB/Oct.	50 ÷ 3,2k @ 12	A/B: 50 ÷ 500 @ 12	C: 50 ÷ 500 @ 24
	dB	gain @ 50 Hz	off / +3 / +6 dB	off / +6 / +12 dB	0 ÷ 12 dB
HRC (Hertz Remote Control)		(-50 ÷ 6) dB	-	-	Optional
Pre-Out	Bypass		Yes	Yes	No
	Hi-Pass		50 ÷ 3,2k @ 12	-	-
	Lo-Pass		50 ÷ 3,2k @ 12	-	-
Distortion - THD	100 Hz @ 4Ω	%	0,03	0,01	0,02
S/N Ratio	Sensitivity @ 1 V RMS	dBA	105	103	100
Damping factor	100 Hz @ 4Ω		300	120	A/B: 100 - C: 250
Size W x D x H		mm	315 x 190 x 50	315 x 190 x 50	345 x 190 x 50
		in.	12.40 x 7.48 x 1.97	12.40 x 7.48 x 1.97	13.58 x 7.48 x 1.97

HMP

AMP specifications			HMP 1D	HMP 4D
Channel Mode			1	4 - 3 - 2
Output Power (RMS) @ 14.4 VDC	@ 4Ω	W x ch	180 x 1	60 x 4
	@ 2Ω	W x ch	300 x 1	75 x 4
	@ 4Ω	W x ch	-	60 x 2 + 150 x 1 (4Ω)
	@ 2Ω	W x ch	-	75 x 2 + 150 x 1 (4Ω)
	@ 4Ω	W x ch (2 ch)	-	150 x 2
	Bypass		yes	yes
Filters	Hi-Pass	Hz @ dB/Oct.	-	65 / 85 / 115 @ 12
	Lo-Pass	Hz @ dB/Oct.	65 / 85 / 115 @ 12	65 / 85 / 115 @ 12
Subsonic	Hi-Pass	Hz @ dB/Oct.	off / 22 / 32 @ 12	-
Boost	dB	gain @ 45 Hz	off / +6 / +9 dB	-
HRC BM (Hertz Remote Control Bass Management)		(-50 ÷ 6) dB	Included	-
Distortion - THD	100 Hz @ 4Ω	%	0,1	0,2
S/N Ratio	Sensitivity @ 1 V RMS	dBA	105	95
Damping factor	1 kHz @ 4Ω		300	45
Size W x D x H		mm	223 x 100.5 x 43.6	223 x 100.5 x 43.6
		in.	8.77 x 3.95 x 1.71	8.77 x 3.95 x 1.71

THE SOUND EXPERIENCE







2019

YOUR LOCAL HERTZ RETAILER IS:



[www.hertzaudiovideo.com](http://www.hertzaudiovideo.com)

The Bluetooth® word mark and logos are registered trademarks owned by Bluetooth SIG, Inc. and any use of such marks by Elettromedia srl is under license.

Sirius, XM and all related marks and logos are trademarks of Sirius XM Radio Inc. All rights Reserved.

All other trademarks are the property of their respective owners.

**HERTZ**

PART OF **ELETTROMEDIA** - 62018 Potenza Picena (MC) Italy - T +39 0733 870 870 - F +39 0733 870 880 - [elettromedia.com](http://elettromedia.com)